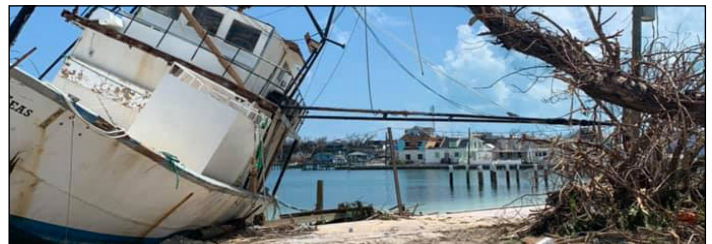


## AQUIFER 360 DC - VERSATILE, HIGH-OUTPUT WATERMAKER



### PRODUCT SPECS

Article Number	AF-360-DC (12/24)
Salt Rejection	99.5%
Technology	High energy-efficient Reverse-Osmosis (RO)
Production / Day	360 gal (136 l)
Production / Hour	15 gal (56 l)
Recovery Rate	10%
Feed Water Source	Fresh, brackish, seawater
Voltage Options	12 or 24 V DC
Power	220W
Watt per Liter	4.5
Water Temperature Limits	Max 110°F (43°C)   Min 36°F (2°C)
Weight	96 lbs (44 kg)
Case Dimensions	31" x 20.5" x 15.5" 79 cm x 52 cm x 40 cm

### FEATURES

- Simple analog controls and gauges, no electronics.
- Super efficient requiring as little as 110 watts to purify seawater, perfect for solar and wind power.
- Heavy duty, military grade, shock and impact resistant plastic roller case.
- Composite construction for superb corrosion resistance.
- Commercial grade diaphragm pumps with run-dry protection.
- Ships complete with everything you need to make pure water.
- Fixed system recovery for easy operation and long service life.
- Spectra Watermakers' world renowned customer service and support, with real technicians available by phone, Whatsapp, and email.

## AQUIFER 360 DC - VERSATILE, HIGH-OUTPUT WATERMAKER



1	Clark Pump Energy Recovery Device
2	Reverse Osmosis Membranes
3	Salinity Monitor
4	Prefilter Assembly
5	Optional AC Power Supply
6	Mil-Spec Plastic Case
7	Flow and Pressure Gauges

### SYSTEM SHIPPING LIST

System
AF-360-DC (12/24)
Included Components
Clark Pump pressure intensifier, 10% recovery rate
Spectra1000 psi composite pressure vessel with seawater RO membrane
2.5" X 10" 5 micron pre-filter (1)
Analog gauges and controls
Mil-Spec plastic case
Product, Feed and Brine hoses
Installation Kit
Filter Wrench
Hand-held TDS/Salinity Meter
User Manual

## AQUIFER 360 DC - VERSATILE, HIGH-OUTPUT WATERMAKER

### SPARE PARTS AND CONSUMABLES

Article Number	Product
FT-FTC-5	5 micron cartridge filters
KIT-HP-S&O	Seal and O-Ring kit for Clark Pump
KIT-HP-10UD	Clark Pump Rebuild Kit 10%
SO-FHS-10H	Prefilter housing O-Ring
EL-FP-DP	Diaphragm drive for feed pump head
PL-PMP-SFPH	Shurflo pump head
EL-FP-12V/EL-FP-24V	Shurflo pump head + motor, 12 V or 24 V
KIT-CHEM-SC2	Spectra alkaline membrane cleaner
KIT-CHEM-SC3	Spectra acid cleaner
KIT-CHEM-SC1	Spectra membrane preservative

### OPTIONAL COMPONENTS

Article Number	Product	Description
KIT-AF-ACPS320W	100-240 V AC Power Supply - Compatible with 24 V Aquifers	Adds AC power versatility to Aquifer units
KIT-AF-ACPS480W	AC Power Supply for AF-200 12 V Aquifer Units	Adds AC power versatility to Aquifer units
KIT-HHM	Hand-held conductivity tester with calibration solution	Extra handheld TDS meter
EL-SLT-INLPMNT2	Inline Salinity Monitor	For digitally testing total dissolved solids (TDS) of product water, which is any salt, metal, or mineral in the water.
KIT-AF-SPK	Aquifer support kit 6ea, 5 Micron filters, 2 ea, chemicals for storage, alkaline and acid cleaning	A full complement of supplies for an Aquifer unit in the field. Recommended for Aquifer deployment.

## ALL PORTABLE & STATIONARY LANDBASED SYSTEMS

### AQUIFER SERIES

Article Number	Product	Product Information	Output
AF-200-DC-12 AF-200-DC-24	Aquifer 200	Highly portable water purification/desalination system. In-case suction pump, external power required.	30 l/h, 8 gal/h
AF-360-DC-12 AF-360-DC-24	Aquifer 360	Highly portable water purification/desalination system with dual in-case suction pumps for higher output, external power required.	55 l/h, 15 gal/h
AF-200-EX-FL	Aquifer 200 EXP Flight Ready	Flight ready and enhanced priming capability using submersible pumps. External power required, compatible with optional Solar Power Pack (KIT-AF-FLRPS3P24)	30 l/h, 8 gal/h
AF-200-PPS	Aquifer 200 Power Pack Solar	Included Solar Panel, a self-sufficient offgrid water purification/desalination solution that fits in a single case.	30 l/h, 8 gal/h
AF-360-EX-FL	Aquifer 360 EXP Flight Ready	Flight ready and enhanced priming capability using submersible pumps, with higher output. External power required, compatible with optional Solar Power Pack (KIT-AF-FLRPS3P24).	55 l/h, 15 gal/h
AF-4000	Aquifer 4000	Revolutionary ultra-high output portable system, 3.5kW generator or external power required.	628 l/h, 166 gal/h
KIT-AF-FLRPS3P24	3 Panel Power Supply Case	Power supply case with options for 12/24 V DC, 100-240 V AC 50/60 Hz as well as included Solar Panels. Compatible with AF-200-EX-FL and AF-360-EX-FL.	n/a

### LANDBASED SERIES

Article Number	Product Information	Watts Used*	Output
LB-400	Compact, modular purification/desalination	300	64 l/h, 17 gal/h
LB-1800M-220	Framed watermaker with manual controls	800	285 l/h, 75 gal/h
LB-1800C-220	Framed watermaker with automated Spectra Connect controller	800	285 l/h, 75 gal/h
LB-2800F-220M	Framed watermaker with manual controls	1200	435 l/h, 115 gal/h
LB-2800C-220	Framed watermaker with automated Spectra Connect controller	1200	435 l/h, 115 gal/h
LB-4000-220	Brackish water system, framed with manual controls	1200**	680 l/h, 180 gal/h
LB-4000C-220	Brackish water system, framed with automated Spectra Connect controller	1200**	680 l/h, 180 gal/h
LB-10000F-230S	Framed watermaker with automated Spectra Connect controller	3800	1,575 l/h, 420 gal/h
LB-14000F-230	Brackish water system, framed with automated Spectra Connect controller	5300**	2,208 l/h, 583 gal/h

\*Using Seawater feed at 32,000 ppm and 25°C (77°F).

\*\*25,000 ppm maximum salinity for these brackish water systems

### Katadyn Desalination, LLC.

Spectra Watermakers  
2220 S. McDowell Blvd Ext  
Petaluma, CA 94954 U.S.A.

Tel: +1 415 526 2780 | Fax: +1 415 526 2787

sales@spectrawatermakers.com | www.spectrawatermakers.com

Spectra Watermakers reserves the right to make changes to this fact sheet.